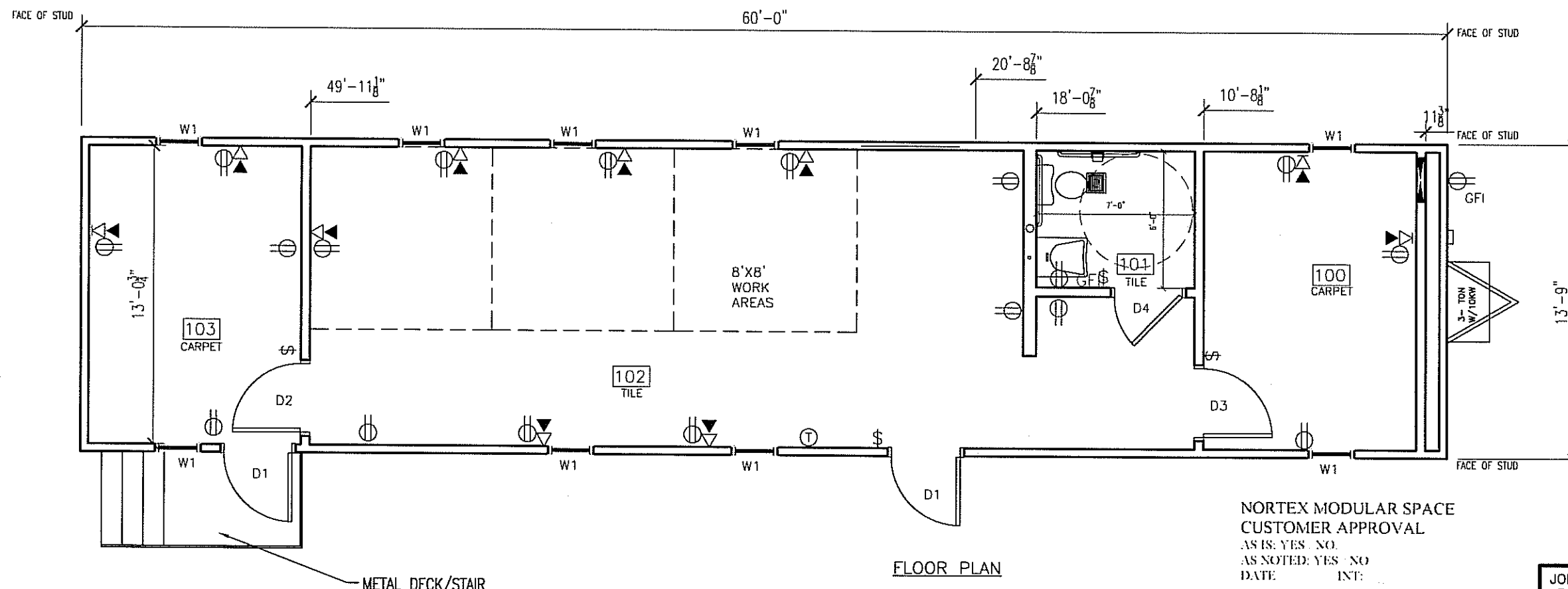


AREA SCHEDULE						
DESIGNATION	DESCRIPTION	FLOOR AREA	FLOOR	WALL	CEILING	BASE
100	OFFICE	121	CARPET	5/8" VINYL COVERED GYPSUM TYPE X	2'X4' LAY IN	4" RUBBER BASE
101	BATHROOM	42	TILE	FRP OVER 5/8" GYPSUM TYPE X	2'X4' LAY IN	4" RUBBER BASE
102	WORK AREAS AND SINK AREA	454	TILE	5/8" VINYL COVERED GYPSUM TYPE X	2'X4' LAY IN	4" RUBBER BASE
103	OFFICE	121	CARPET	5/8" VINYL COVERED GYPSUM TYPE X	2'X4' LAY IN	4" RUBBER BASE

WINDOW SCHEDULE			
DESIGNATION	DESCRIPTION	RD	QTY
W1	2044 ALUMINUM BRONZE FRAME, DOUBLE INSULATED LOW E GLASS W/ ALUMINUM MINI BLINDS	24 1/2" X 52 1/2"	9

DOOR SCHEDULE					
DESIGNATION	SIZE	DOOR MATERIAL	FRAME	RD	QTY
D1	306BL	STEEL W/ PENCIL VISION	STEEL	40 1/2" X 82 1/2"	2
D2	306BL	MOHAWK SOLID CORE W/ VISION GLASS	REDIFRAME	37" X 81"	1
D3	306BR	MOHAWK SOLID CORE W/ VISION GLASS	REDIFRAME	37" X 81"	1
D4	306BL	MOHAWK SOLID CORE	REDIFRAME	37" X 81"	1
D5	206BR	MOHAWK SOLID CORE	REDIFRAME	25" X 81"	1

COMCHECK AREA
 (1)SIDEWALL = 60' X 10'-0 3/4" = 618SF + PEAK AREA OF 18SF = 636SF
 (1)ENDWALL = 13'-9" X 10'-0 3/4" = 137.9SF
 SIDEWALL X 2= 1272SF + ENDWALL X 2 = 275.8 FOR A TOTAL OF 1547.8



LTR	REVISION	BY	DATE	DRAWN BY:	PROJECT:	TITLE:
				REW	VALERO ENERGY	1460STD FLOOR PLAN
				DATE: 10/20/07	SCALE: 3/16" = 1'-0"	DWG# 1460STD SHEET: A-101

JOE STEEDE, P.E.
 13999 GOLDMARK, SUITE 374
 DALLAS, TX 75250 PHONE 972-238-1611

NORTEX MODULAR SPACE
 555 JUBILEE LANE
 LEWISVILLE, TX 75056
 PHONE: 972-492-4040
 FAX: 972-492-2704